



# REME HOTEL WERTACH

## A VISITORS GUIDE TO THE REME HOTEL

### INTRODUCTION

The REME Hotel is situated on a hillside above the town of Wertach, in southern Germany. The town centre is only 3 minutes walk from the Hotel, where one can experience the delights and atmosphere of life in a small Bavarian town. Ideally situated in the foothills of the Bavarian Alps, this 32 bed Hotel is within easy driving distance of the Austrian border which is only 10 miles away.

The REME Hotel was purchased by the Corps in the early eighties and has provided an affordable and friendly holiday base for all Corps members and their families in both summer and winter. The Hotel is managed as a private enterprise, providing excellent facilities in a military-free environment.

“GUESTHOUSE” type accommodation is on offer, with all areas and rooms decorated in a traditional Bavarian style. Guests determine the pace of their holiday, with no pressure being applied to participate in the many activities available.

### ELIGIBILITY

Entitled visitors to the REME Hotel include:

- All serving Corps members and their immediate families.
- All retired Corps members and their immediate families (Provided that they are members of the REME Association).
- Any serving soldier, or UKBC ID card holders, working for the benefit of the Corps or Army in BA (G) are entitled to use the facilities on a fill up basis.

### CATERING

Bed and Breakfast is provided as part of the overnight charge. An excellent evening meal service is provided 6 nights of the week at very reasonable rates. Guests can order packed lunches; these are provided at a small charge. All meals other than breakfast are paid for at the hotel.

The evening meal is taken between 6pm and 7.30pm – with the exception of Thursday, which is Ruhetag. (This is in keeping with the area; it is a closed day that allows the staff a day off) Meals are served in a restaurant type environment, enabling guests to choose from an extensive menu, there are also choices for children, our vegetarian guests and those with other special dietary requirements.

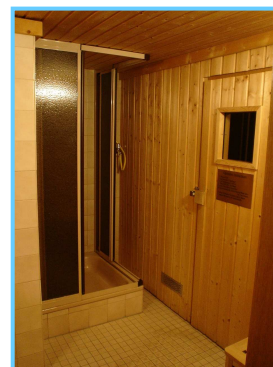
## **EVENING MEALS**

Guests who wish to book an evening meal on arrival are requested to contact the Hotel Manager on +49 (0)8365 1055 so that they can confirm their exact requirement 2 days prior to arrival. The current charges for evening meal at the hotel is, starter €3.50, Adult main €10.00, Children Main €6.50 and Dessert €3.50.

## **FACILITIES**

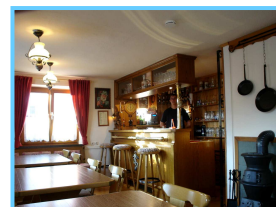
A brief resume of the facilities on offer include:

- En-suite facilities in some rooms, TV and BFBS satellite in all rooms.
- Washbasins in all rooms, with bath towels, bathrobes and hair-dryers provided.
- Shower and toilet facilities on each floor (disabled facilities on ground floor).
- Resident's only non-smoking bar and restaurant.
- TV room with DVD and Satellite TV.
- Children's room with TV and play station.
- Tack room with hot drinks machine
- Family sauna.
- DVD and Video Hire.
- Large garden area.
- Car parking.
- Ski Lift Passes with local ski hire can be arranged.
- Laundry service provided (with small charge).



## **BAR FACILITIES**

The Hotel bar stocks a full range of wines, spirits and local beers and is open daily from 6 -11.45 pm (Closed on Ruhetag). These timings are strictly adhered to.



## **GUEST ROOMS**

There are a variety of different rooms on offer at the Hotel, from family en-suites to bunkrooms. All rooms are provided with towels, adult bathrobes and hot drink making facilities.



## **TELEPHONE**

A pay phone for guest use is provided and accepts incoming calls on 0049 (0) 8365 1372.

## **NO SMOKING POLICY AND FIRE REGULATIONS**

Due to the Hotel being of wooden construction, and for the comfort of all guests, smoking is only permitted outside of the main building. Guests are asked to acquaint themselves, and their families, with the Hotel fire orders upon arrival, copies of which are displayed in all guestrooms and at fire points throughout the Hotel.



## PETS AND ANIMALS

Due to the style of accommodation at the Hotel, health and hygiene regulations and in the interest's of animal welfare, NO PET OR ANIMAL OF ANY DESCRIPTION is to be brought to the Hotel. This rule is not negotiable. Personnel attempting to bring pets or animals to the Hotel will have their booking cancelled.



## WINTER TRANSPORT

Guests residing at the Hotel during the ski season are to be aware that it is now German Law to have winter tyres fitted to their cars; in addition it is advisable to carry a set of snow chains in their vehicles at all times. It is also prudent to have the car serviced before travelling to Bavaria, with anti-freeze mixture strengths checked to give protection down to at least -30 Deg C.



## KURTAX

Local Kurtax charges of approx €1.20/adult/€0.70 child day must be paid at the hotel.

## TV AND DVD HIRE

All rooms are furnished with a TV with many having a DVD and video players.

## SKI HIRE & LIFT PASSES

Ski equipment (skis, poles, and boots) can be hired from a local shop in the village at very competitive rates. Lift passes are provided at the hotel a daily rate of €15.00 for Obergoch (when available).

## INTERNET

The hotel has wireless internet available to guests for a cost of €10.00, this fee will be added to your end of stay bill. The network is available throughout the hotel, although the TV room has the best signal strength. Please speak to the hotel manager for the connection password.

## HOLIDAY AND MEDICAL INSURANCE

Serving soldiers and their families on the strength of a unit based in Germany, who are on official leave, are covered for emergency treatment only. UK based personnel are to apply for a European Health Insurance Card (EHIC) prior to arrival which entitles them to medical treatment during a temporary stay in a foreign country.

Regrettably, we can no longer absorb cancellation costs; therefore adequate holiday insurance is strongly recommended, with minimum cover to include:

- Third party liability for persons and property, including medical evacuation from ski areas (winter season only).
- Medical cover for personal injury, medical expenses and repatriation.
- Personal cover for belongings, property and cancellation for any reason.

Regrettably, we can no longer absorb cancellation costs and Health Alliance medical cover is not provided for visitors to the REME Hotel. Adequate holiday insurance is therefore strongly recommended, with minimum cover to include:

## ARRIVAL

It is requested that where possible you schedule your arrival at the Hotel between 1pm and 6pm. Departures should be planned for approx 10am, which enables Hotel staff sufficient time to clean and prepare the rooms for the next visitors. Your consideration of these timing is appreciated.

## BOOKING PROCEDURE

All booking enquiries and accommodation payments should be made through Capt Keith Snell or Mrs Susan Crossfield at the booking office in Herford.

Contact: REME Facilities Bavaria  
Equipment Support Branch  
HQ 1(UK) Armoured Division  
British Forces Post Office 15

Tel: Herford Civil +49 (0)5221 995 3447  
Email: susan.crossfield767@mod.uk

**Bookings will not be accepted more than one season in advance (i.e. for all winter bookings no earlier than 1st June, and for all summer bookings no earlier than 1st December).**

## ACCOMMODATION CHARGES

	REME	Non REME (10% surcharge)
1 Night	€27.00	€29.80
2 - 3 Nights	€22.00	€24.20
4 - 6 Nights	€18.00	€19.80
7 or more Nights	€16.00	€17.60
Children 12 years old & under	€12.50	€13.20
Infants 3 years old & under	€ 3.50	€ 3.85
En Suite Facilities per person per night (4yrs and older)	€ 4.00	€ 4:00

## HOTEL BOOKINGS DURING PEAK SEASONS

Bookings for a single night at the REME Hotel during peak Summer holiday months (July and August) will not be accepted until 2 weeks prior to visit.

## LOCAL INFORMATION

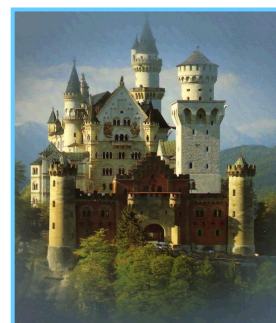
### Area

The main industry of the Allgäu is tourism and as such, it offers virtually everything the visitor could demand. Seasonal local events include carnivals, concerts, and beer and folklore festivals. The immediate area around Wertach offers "Wanderwegs" that are clearly marked with route indicators and distances, ideal places to just pack a day sack and walk. There are of course numerous guesthouses along the various walkways that are only too willing to serve snacks and drinks. The Grüntensee and Rottachsee are only a few minutes away by car, where you can sail, swim, windsurf or just sunbathe. In the winter months the Ski slopes are only 15 minutes from the Hotel and offer facilities for all the family from beginner to expert. There is a "rodelbahn" in the area for sledging in the summer months and there are numerous Langlauf Loipes for the more energetic of our visitors.



## Towns

- **Kempton** A few kilometres north of Wertach, Kempton offers a large shopping area, cinema, theatre, and a ten pin bowling centre. It also has a kegelbahn and many places to eat and drink. Kempton has the nearest major railway station to the Hotel (Kempton/Oy Mittleberg).
- **Sonthofen** Some 24 kilometres from the Hotel, Sonthofen is a typical Bavarian town with numerous shops, supermarkets and restaurants.
- **Oberstdorf** Where you can catch a cable car to one of the highest points in Germany, the Nebelhorn; or alternatively ski the Fallhornon, Germany's largest ski arena. You will find on the other side of the valley one of the largest ski jumps in Europe.
- **Kleinwalsertal** A beautiful Austrian town nestling in the valley just over the border, approximately one hour from the Hotel. The road winds its way through picturesque villages that are famous for the manufacture of woollen, Austrian style clothing.
- **Oberammergau** (Passion Dorf) A very beautiful town where there are many picturesque buildings and local sights. Home of the Passion Plays.
- **Fussen** Another beautiful town that has many picturesque buildings and places of interest. It is also home to the famous 'Passion Play' and nearby Schloss Neuschwanstein.



## Weather

The weather in Southern Germany is generally better than that experienced in the North. The Bavarians say that "The weather is never bad; it's just that people wear the wrong clothing".

## Activities

Activities available in the immediate area include:

Walking	Mountain Biking	Fishing
Orienteering/Map reading	Swimming	Sailing
Water Skiing	White Water Rafting	Windsurfing
Canoeing	Klettersteig	Ten pin bowling
Ice Skating	Rock climbing	Golf

## CONTACT DETAILS

Manager: WO2 (AQMS) Victoria McMillan

Address: BERGHOF URBAN  
SONNENHANG 8  
87497 WERTACH

Tel: +49 (0)8365 1055

## REME HOTEL, WERTACH – ROUTE CARD

1. This route card starts from the Autobahn Kreuz Ulm.
2. Autobahn 7 past Ulm in the direction of Memmingen/Kempton.
3. Autobahn 7 past junctions for Kempton and Oberstdorf.
4. Exit junction 137 in the direction - Wertach (Oberjoch).
5. At T-junction turn right towards Oberjoch, Hinderlang, Wertach on B309.
6. Travel approx 2km to a roundabout take 2nd Exit sign posted Wertach on B310.
7. At the traffic lights turn right - sign posted Wertach. (Gruntensee Strasse).
8. Follow road into Wertach looking for the church upon the hill.
9. The priority road bends 90° to left - carry straight on off the priority road (Hotel Jorg is on the left hand side) (Sankt Ulrich Strasse).
10. Follow road up hill around the church on the left.
11. Turn left at the T-junction and then turn right straight away. (Am Berg then Sonnenhang).
12. The REME Hotel is approx 150m up the hill on the right hand side just after garden centre on left hand side (Sonnenhang 8).
13. See overleaf for local map.

